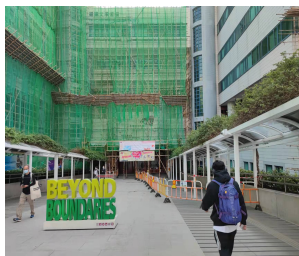


Directions to LT12

All scientific sessions of the workshop are held in LT12, Level 4, Academic 1 Building, City University of Hong Kong.

1. If you are arriving by MTR, you are in front of the Yeung Kim Man Academic Building (杨建文学术楼, former AC1 学术楼1, 4/F). Enter AC1 through the main gate (after exiting the tunnel). Then take the escalator from 3/F to 4/F. LT12 is on your left.



2. If you are arriving by car, you are likely to get off near the Lau Ming Wai Academic Building (刘鸣炜学术楼, former AC3 学术楼3).

You should go straight down this road. Turn left when you see the Bank of China (Hong Kong) Complex (中国银行(香港)综合楼). Then go straight (you will see the swimming pool on your right) and enter the red door of Yeung Kim Man Academic Building. Then go through the lobby until you see the escalator to 3/F, LT12 is on your right.

